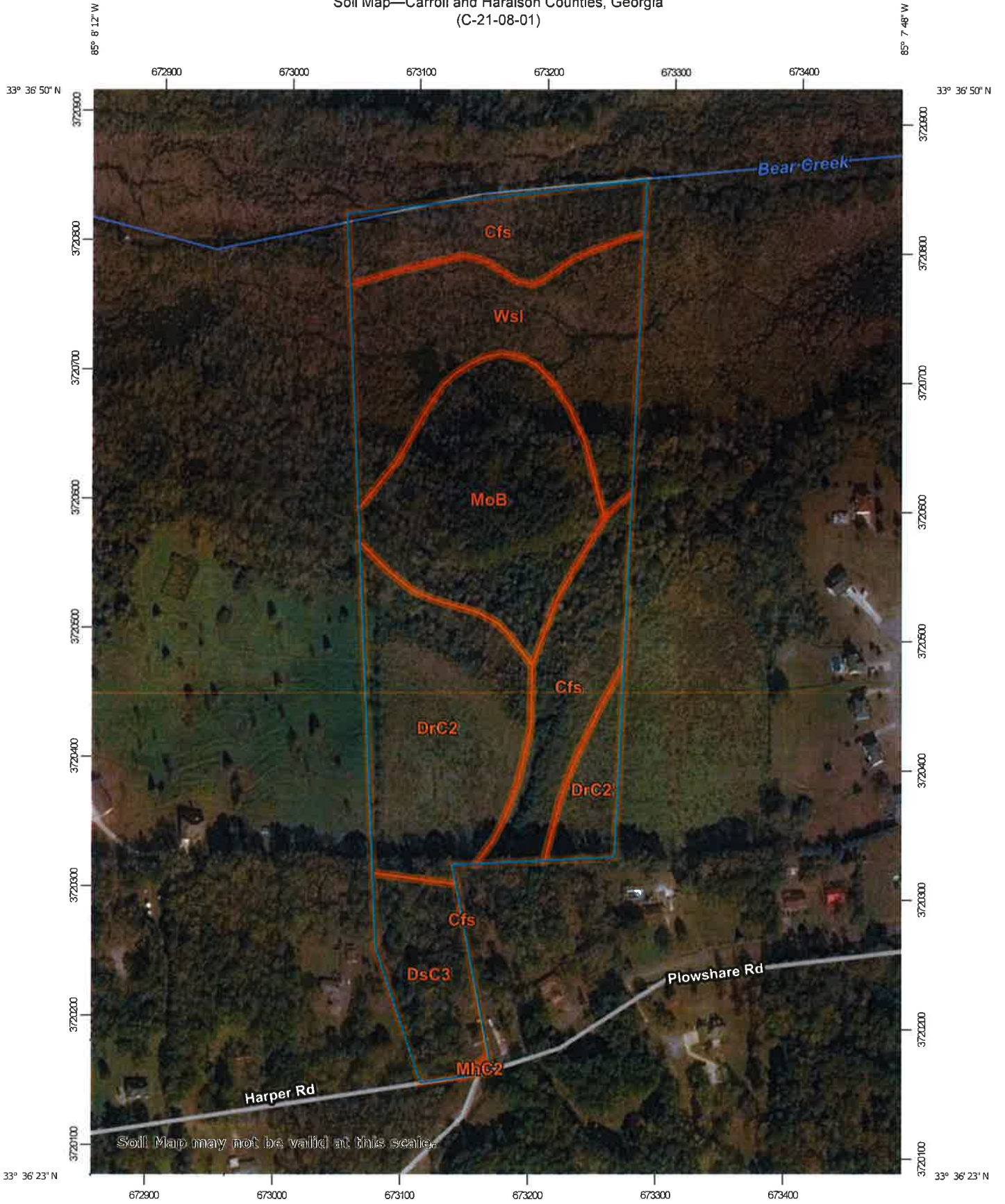


Soil Map—Carroll and Haralson Counties, Georgia  
(C-21-08-01)



Map Scale: 1:4,090 if printed on A portrait (8.5" x 11") sheet.

0 50 100 200 300 Meters

0 150 300 600 900 Feet

Map projection: Web Mercator Corner coordinates: WGS84 Edge tics: UTM Zone 16N WGS84

### Map Unit Legend

Map Unit Symbol	Map Unit Name	Acres in AOI	Percent of AOI
Cfs	Chewacla silt loam, 0 to 2 percent slopes, frequently flooded	6.3	20.9%
DrC2	Davidson gravelly loam, 6 to 10 percent slopes, eroded	7.4	24.8%
DsC3	Davidson gravelly clay loam, 6 to 10 percent slopes, severely eroded	2.5	8.3%
MhC2	Madison gravelly fine sandy loam, 6 to 10 percent slopes, moderately eroded	0.0	0.1%
MoB	Masada fine sandy loam, 2 to 6 percent slopes	6.9	23.2%
Wsl	Worsham silt loam	6.7	22.5%
<b>Totals for Area of Interest</b>		<b>29.8</b>	<b>100.0%</b>