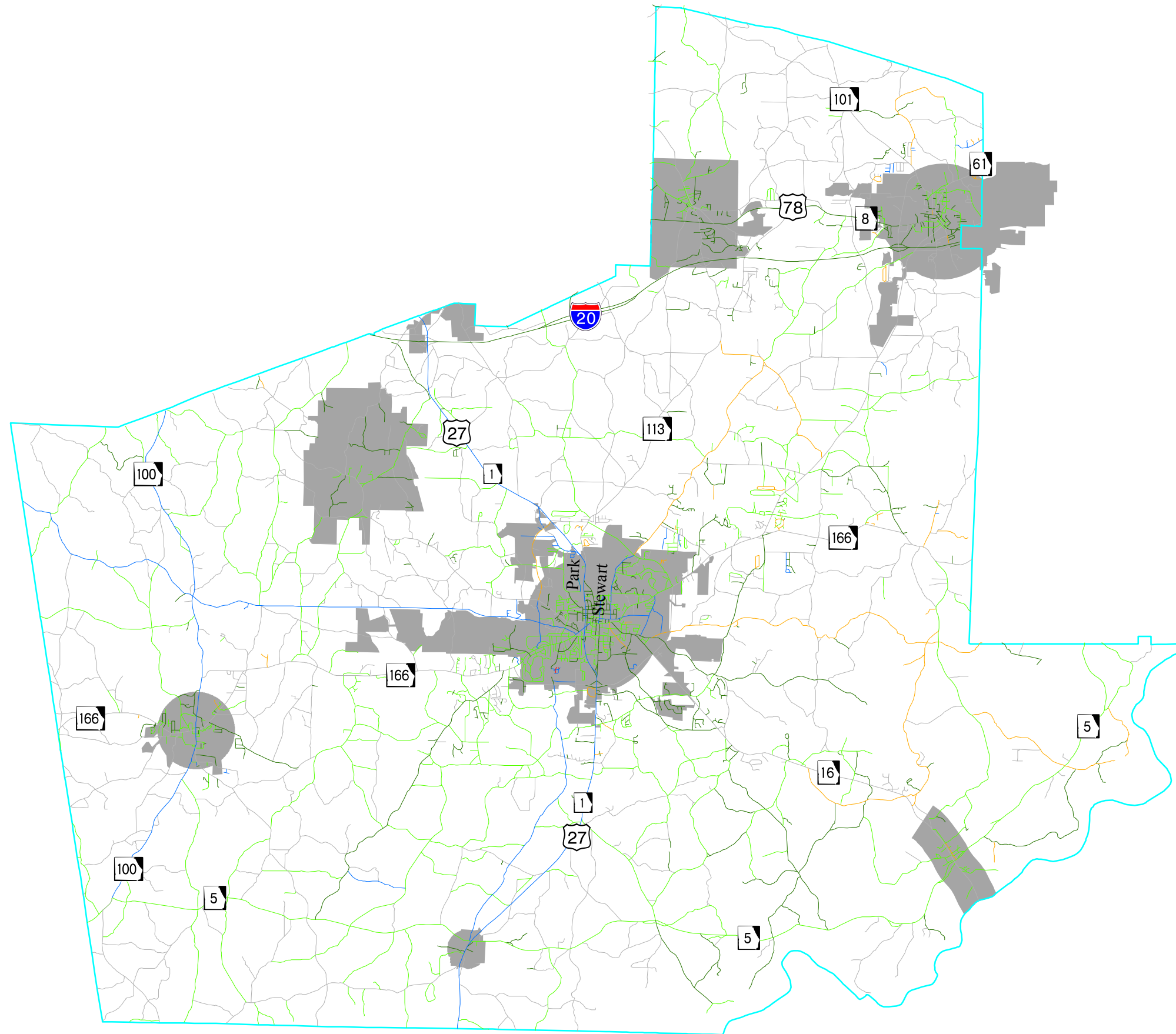




Map 12: Road Pavement Classifications

Map 12 Pavement Condition Classification Carroll County, Georgia

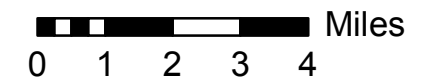


Legend

Pavement Condition Rating (PACES)

PACES2

- Badly Deteriorated
- Considerable Deterioration
- Sufficient
- Good
- Very Good
- Unknown
- County Boundary



11/11/2004

PLANNING WORKS

Please use this map as a guide and not as definitive information. The areas depicted by this map are approximate and are provided for illustrative purposes only. While every effort has been made to ensure the accuracy, completeness, correctness, and timeliness of information presented within this map, the burden for determining appropriateness for use rests solely with the user. This map is provided "as is" with no warranties, express or implied.