



## CHAPTER V. COMMUNITY FACILITIES AND SERVICES

### *A. INTRODUCTION*

Governments of all levels provide a variety of public goods and services that often are taken for granted. Public water systems, sewer systems, roads, parks, schools, policing, emergency services and cultural facilities are common services that help define the local quality of life, as well as the health of a community and its growth potential. For economic development to occur, a solid base of infrastructure must be present. This section identifies Carroll County's existing facilities and key service issues.

### *B. GENERAL COUNTY GOVERNMENT*

Carroll County government is conducted in the County Courthouse and the Administrative Complex. The Courthouse currently houses 50 employees. The County has begun planning for an expansion of courthouse facilities to address space needs through 2030. The preliminary analysis of space needs suggests that over 117,000 square feet will be needed by 2030 for 236 courthouse employees. Before embarking on courthouse expansion, the County intends to further study its needs and facility management.

In addition to the courthouse, the County's Administrative Complex includes three buildings. The main building is 12,000 square feet and the other two buildings are 7,200 square feet and 4,000 square feet. Seventy-five county employees are housed in the administrative complex, along with state employees in the Department of Environmental Health, NRSC and Veterans Affairs. The amount of space is currently adequate for the present number of employees and can accommodate modest growth. **Map 8 in Appendix B** identifies the location of community facilities within the County, including the Courthouse and administrative buildings.

The other unit of government that operates county-wide is the Carroll County Water Authority. The CCWA has experienced steady growth in both customers and employees over the last several years. The Water Authority recently purchased a new building and has plans to relocate to this larger facility in order to better meet the needs of a rapidly growing consumer base.

### *C. WATER SUPPLY AND TREATMENT*

There are six cities that operate municipal water systems: Carrollton, Bowdon, Roopville, Temple, Villa Rica and Whitesburg. **Exhibit 100** shows the current water supply capacity and future capacity based on planned improvements. The total current capacity including potential sources from Douglas and Heard Counties is 18.2 million gallons per day (MGD). All but Bowdon have water demands that are near the supply capacity. The Cities of Roopville and Whitesburg get their water from wells. Mt. Zion and Villa Rica purchase water from the Carroll County Water Authority (CCWA), which is a separate entity from the County government. The CCWA operates a countywide water distribution system of more than 750 miles of pipe and services over 16,000 retail water customers. The primary water supply is a 650-acre, 4 billion gallon reservoir and 3 primary groundwater wells. The Water Authority is investigating the prospect of developing additional water sources to meet projected growth demands.



**Exhibit 100: Water Supply Capacity**

<b>Municipal System</b>	<b>Capacity In 2002 (MGD)</b>	<b>Future Capacity (MGD)</b>
City of Carrollton	12.20	12.40
Carroll County Water Authority	0.70	14.50
City of Bowdon	1.00	2.90
City of Roopville	0.09	0.09
City of Temple	0.28	0.28
City of Villa Rica	1.70	1.70
City of Whitesburg	0.03	0.03
<b>External Supplies</b>		
Douglas County Water Authority	2.50	2.50
Heard County Water Authority	0.40	0.40
<b>Total Capacity</b>	<b>18.90</b>	<b>34.80</b>

*Source: Carroll County, Georgia*

Different levels of water service are necessary to support different land use patterns. Reliance on private well water is generally adequate to serve very low-density rural residential land uses. However, suburban residential and urban land use patterns typically require centralized water service to provide an adequate quantity of water at sufficient fire flows for fire suppression. According to the 1990 U.S. Census, there were 9,037 homes relying on domestic well water. The CCWA continues to extend water lines to rural areas and areas not served by a centralized water system to give residents the option of connecting to the CCWA water system. The CCWA continues to investigate the feasibility of extending water service to as many Carroll County residents as possible.

***D. WASTEWATER TREATMENT***

The cities of Villa Rica, Carrollton, Bowdon, Temple and Bremen operate centralized wastewater systems. Bremen’s system does not serve areas in Carroll County. **Exhibit 101** shows the existing wastewater treatment capacity and future capacity based on planned improvements. The total current municipal treatment capacity is 8.90 MGD. The treatment and disposal of wastewater in other areas is almost exclusively accomplished with on-site wastewater facilities (septic tanks, waste stabilization ponds, infiltration systems, etc...). The one exception is the centralized system at Fairfield Plantation, which was originally operated by the developer for fewer than 100 homes. This system is operated and maintained by the CCWA and now has over 1,750 services. The CCWA continues to work to reduce inflow and infiltration and is investigating increasing its wastewater capacities through expansion, new facilities or intergovernmental agreements with neighboring wastewater providers.



**Exhibit 101: Wastewater Treatment Capacity**

<b>Municipal Wastewater Treatment System</b>	<b>Capacity In 2002 (MGD)</b>	<b>Planned Capacity (MGD)</b>
City of Bowdon	0.40	
City of Carrollton	7.00	7.00
City of Temple	0.20	1.00
City of Villa Rica	1.30	1.30
<b>Total</b>	<b>8.90</b>	<b>9.30</b>

*Source: Carroll County, Georgia*

Lack of centralized wastewater systems in most unincorporated areas has been a key constraint to development. The Georgia Department of Human Resources requires a minimum lot size of 1 acre for the installation of an on-site sewerage system if no centralized water service is available, although an individual site may require more land due to soils type.<sup>35</sup> A minimum ½ acre lot size is required if centralized water service is available. Development at greater densities requires a collective wastewater treatment system to ensure groundwater quality. The proliferation of septic systems has raised concerns about their extensive use in development areas.<sup>36</sup> In 1990, there were 10,223 homes on public sewer systems while 17,067 either had septic tanks or cesspools. Providing sewer service to rural areas can be costly.

Lack of centralized wastewater services has promoted large lot development in unincorporated Carroll County. In response to this challenge the County and the Carroll County Water Authority (CCWA) have been exploring the potential use of community wastewater systems. These systems would allow greater densities of development at prices that are comparable to septic systems. They also would facilitate development of conservation subdivisions. However, they must be monitored and maintained to ensure their ongoing operations are effective. One obstacle for developers is that, unlike septic systems, community systems require up-front investment in the collection and treatment system. Additionally, they require ongoing funding and management by a competent entity, such as CCWA. This Plan anticipates the development of a coordinated wastewater study to determine the best long-term strategies for providing safe, efficient and environmentally responsible wastewater service that promotes efficient land use patterns.

***E. POLICE PROTECTION***

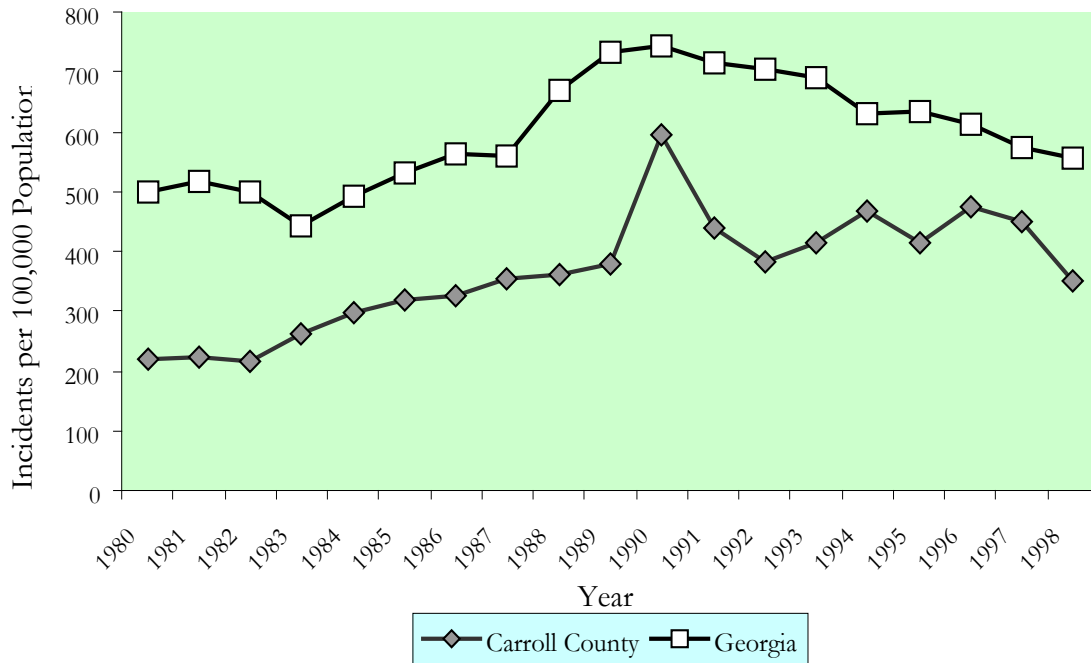
Carroll County’s crime rates are lower than those of Georgia. **Exhibits 102, 103 and 104** indicate that between 1980 and 1998 the County has consistently had lower rates of violent crime and property crime than the state.

<sup>35</sup> Georgia Department of Human Resources, Manual for On-Site Sewage Management Systems (May 2001), Pg M-1.

<sup>36</sup> Trust for Public Land, University of Massachusetts and USDA Forest Service, Upper Little Tallapoosa River Watershed – Source Water Stewardship Exchange Team Report (April 30, 2003), Pg 6.

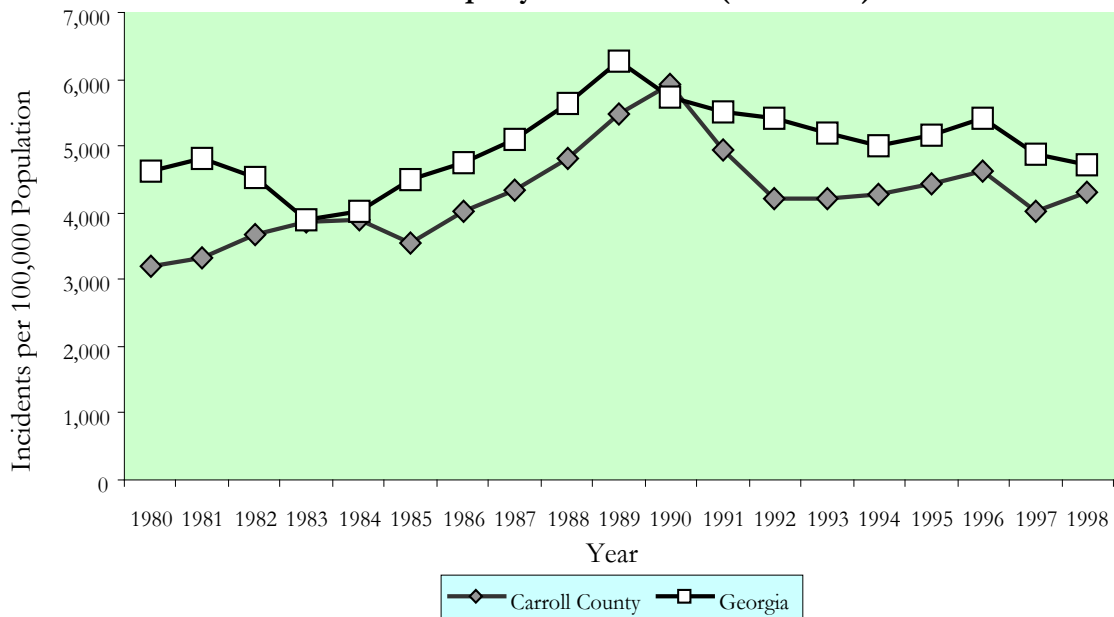


**Exhibit 102: Violent Crime Rates (1980–1998)**



Source: Georgia Bureau of Investigation (<http://www.ganet.org>)  
 \*Rate is measured in the number of incidents per 100,000 population.

**Exhibit 103: Property Crime Rates (1980–1998)**



Source: Georgia Bureau of Investigation (<http://www.ganet.org>)  
 \*Rate is measured in the number of incidents per 100,000 population.



Exhibit 104: Crime Rate\* Statistics (1980-1998)

Year	Carroll County			Georgia		
	Total Violent Crime Rate	Total Property Crime Rate	Total Indexed Crime Rate	Total Violent Crime Rate	Total Property Crime Rate	Total Indexed Crime Rate
1980	220.07	3,201.65	3,421.72	499.21	4,639.16	5,138.38
1981	223.11	3,319.04	3,542.15	516.28	4,812.31	5,328.58
1982	216.32	3,665.69	3,882.01	500.53	4,537.94	5,038.47
1983	260.36	3,857.93	4,118.29	444.22	3,897.25	4,341.47
1984	298.06	3,884.39	4,182.44	493.75	4,032.65	4,526.40
1985	317.57	3,548.24	3,865.81	531.53	4,482.29	5,013.82
1986	323.95	4,007.12	4,331.07	564.60	4,754.02	5,318.62
1987	353.05	4,325.64	4,678.69	557.72	5,093.32	5,651.05
1988	362.25	4,804.51	5,166.77	668.13	5,640.25	6,308.38
1989	377.60	5,491.51	5,869.11	731.12	6,266.46	6,997.58
1990	594.14	5,930.23	6,524.37	742.63	5,737.60	6,480.23
1991	437.34	4,945.09	5,382.43	716.04	5,525.74	6,241.79
1992	382.14	4,211.67	4,593.81	705.07	5,417.24	6,122.31
1993	415.35	4,202.95	4,618.30	690.57	5,192.27	5,882.84
1994	466.94	4,273.05	4,739.98	631.79	5,017.52	5,649.31
1995	415.92	4,437.74	4,853.66	632.55	5,176.12	5,808.67
1996	475.11	4,617.84	5,092.95	614.02	5,430.45	6,044.46
1997	450.73	4,020.84	4,471.56	573.02	4,864.14	5,437.16
1998	350.51	4,319.39	4,669.90	554.79	4,704.87	5,259.66

Source: Georgia Bureau of Investigation (<http://www.ganet.org>)

\* Rate is measured in the number of incidents per 100,000 population.

The Carroll County Sheriff Department (CCSD) provides policing, incarceration and court delivery services. The CCSD is comprised of the jail, administration, criminal investigation and patrol divisions. Policing functions are primarily provided within the unincorporated portions of the County. Housed in 84,727 sq. ft. of the Carroll County Public Safety facility, the department employs 191 officers and administrative staff. In 1991, the County constructed a Correctional Institute, which houses over 300 county and state inmates, who contribute to the maintenance of county roads. The correctional facility is operated by the jail division. In 2002, the Department received 31,309 calls for service, which equates to approximately 550 calls per 1,000 rural residents.

#### ***F. FIRE PROTECTION AND EMS SERVICES***

Carroll County Fire Rescue operates a headquarters and a maintenance facility in Carrollton and 13 stations throughout the County including facilities within the city limits of Bowdon, Mt. Zion, Roopville, Temple, Villa Rica, and Whitesburg (**Map 9, Appendix B**). Each station is equipped with a 1,500 gallon per minute (GPM) Class “A” NFPA compliant pumper. Additional special apparatus include a 2,000-gallon tanker, two aerial apparatus, two air and light units, five brush trucks, a mobile decontamination truck and trailer, a Mobile Operations Center and four rescue boats. Staffing consists of 110 career positions, including administration and 115 volunteer firefighters. During each shift, all engine companies have at least two (2) career firefighters on duty and all ladder companies have at least three (3) firefighters on duty.



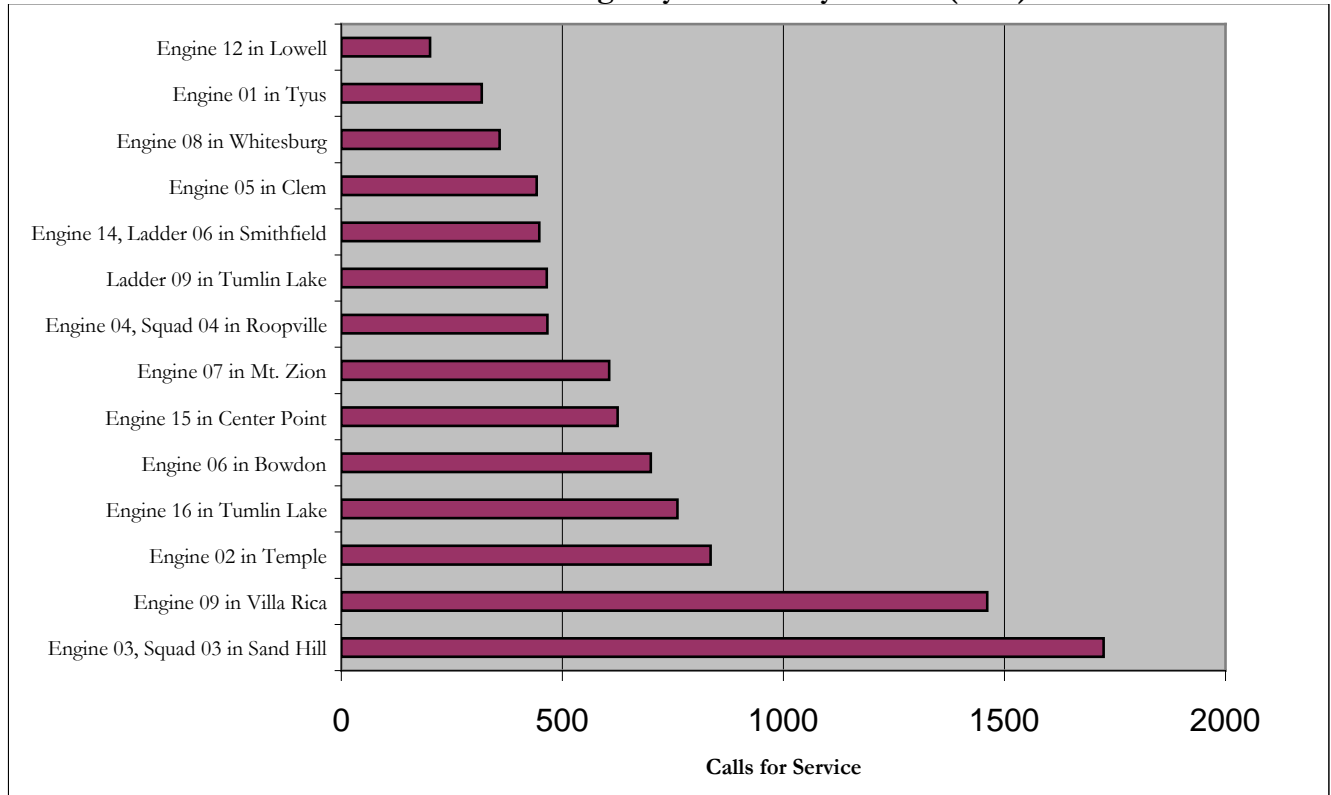
Carroll County Fire Rescue responded to 7,130 calls for assistance during 2007, which was the highest number of responses in a single year since the department was chartered in 1979. The 2007 level of activity represents a 10.47% increase in requests for assistance compared to 2006 (6,454). As the population of the County increases so will the assistance calls. In 2007, emergency medical calls comprised over half of all calls for service. Fire related responses made up almost 11.43% of calls. Engine 09 in Villa Rica responded most often with 1,461 calls in 2007. **Exhibit 105** illustrates the number of calls for service for each unit or company. The disparate demands illustrate the challenge of staffing and equitably funding facilities.

Carroll County Fire Rescue serves the incorporated area of Carroll County and all of the municipalities except for the City of Carrollton. The City of Carrollton Fire Department serves areas within the city limits and the vicinity from three (3) stations within the city. The County pays the City of Carrollton \$582,000 annually for service outside the city limits. Mutual aid agreements exist between Carroll County, Carrollton and adjacent Counties. In addition, Carroll County Fire Rescue accesses the Carroll County Water Authority resources through hydrants located throughout the County and routinely performs flow tests to ensure adequate water supply for fire suppression.

The Carroll County Emergency Management Agency is responsible for assisting in the protection of lives and property of Carroll County citizens in the event of natural or manmade disasters. Emergency Management anticipates emergencies, takes steps to prevent loss of life and property, and provides quick response when disasters strike. Attached to Carroll County Fire Rescue, the Emergency Management Agency was established to develop and implement a countywide program. Emergency Management and other emergency agencies identify hazards that face each community and develop contingency plans for each potential emergency. Emergency Management provides the expertise, training and coordination that local governments need to protect lives and property.



**Exhibit 105: Calls for Emergency Services by Station (2007)**



Source: Carroll County Fire and Rescue

The West Georgia Local Emergency Planning Committee (LEPC) is composed of concerned citizens from Carroll, Haralson and Heard Counties who represent business, industry, public safety, local government, law enforcement, fire, emergency management, emergency medical services, health departments, schools, environmental groups and the news media. An LEPC is required to develop an emergency plan to educate, communicate and protect the local community during an accidental release of toxic chemicals. The LEPC also collects inventories of regulated chemicals each year and responds to inquiries from the public regarding community right-to-know issues. The LEPC acts as a source of information for anyone interested in chemical safety, including maintaining a library of Material Safety Data Sheets (MSDS) for chemicals in use in the three counties.

**G. EDUCATIONAL FACILITIES**

The importance of strong schools to a community’s health cannot be overstated. An educated citizenry of all ages has numerous social and economic benefits including, but not limited to: lower crime rates, higher quality workforce, higher wages, increased property values, enhanced cultural activities, stronger community leadership and greater economic potential. Three school districts provide service in Carroll County. The Bremen School District serves students living in the small portion of that community located in the County. The City of Carrollton School District serves students in that city. The remainder of the County is served by the Carroll County School District.

The “Carroll Tomorrow” economic development strategy recognized education’s importance when it stated the following primary goal:



*“GOAL 3, Quality Workforce and Education – Local schools, higher education and the business community will partner to produce a “world class” workforce through a coordinated workforce development system.”*

The “Carroll Tomorrow” plan went on to include tangible objectives such as:

- Raise the performance of the public schools in Carroll County into the top 5% statewide,
- Increase the high school completion rate above 85% in the public school system,
- Increase the number of high school graduates completing courses in higher mathematics and physical sciences.

The Carroll County Board of Education operates the school system consisting of 11 elementary attendance districts and 6 post-elementary attendance districts (**Map 10, Appendix B**) with 12 elementary, 5 middle and 5 high schools. In addition to traditional schools, the district operates administrative offices, maintenance facilities, transportation facilities, a vocational center and a psycho-education center. **Exhibit 106** shows the projected enrollment for 2011 by school, including proposed schools. Enrollment is projected to reach 18,356 by 2011 with 9,097 elementary, 4,254 middle and 5,005 high school students.

One of the key issues facing the County and the District is site selection for new school facilities. A poorly located school can generate enormous costs for transportation and utility improvements. These costs are exacerbated by increased development pressures that result from new elementary schools and, to a lesser extent, middle schools. Coordination of school siting decisions with the County’s capital improvements programming and land use decisions is essential for efficient service provision.



Exhibit 106: Projected School Enrollment (2011)

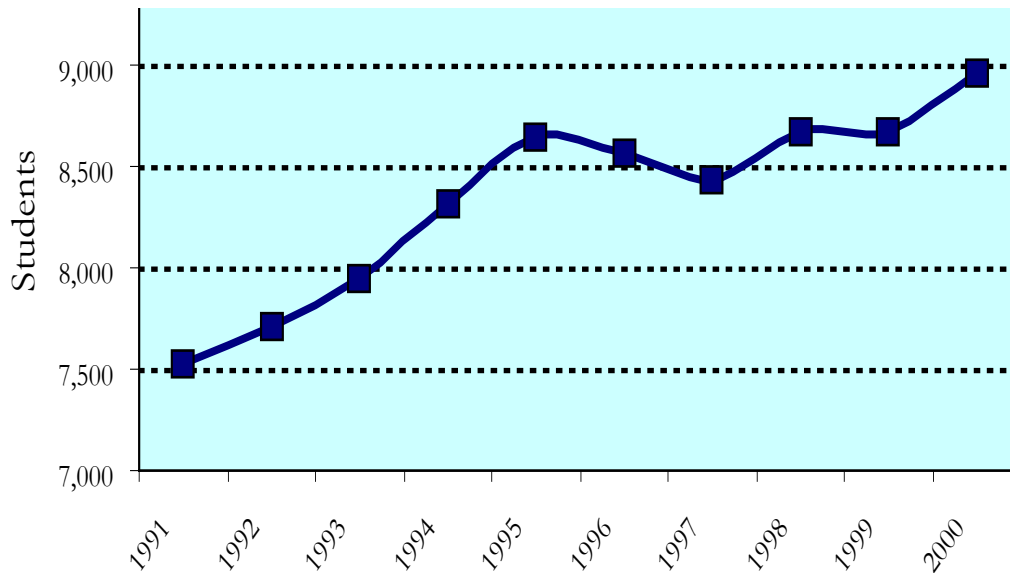
School	Growt h	School Capacity	FY05	FY06	FY07	FY08	FY09	FY10	FY11
Bowdon Elementary	101%	725	738	745	753	760	768	776	783
Jonesville Middle	101%	500	359	361	363	364	366	368	370
Bowdon High	101%	575	429	433	438	442	446	451	455
<b>TOTAL</b>		<b>1800</b>	<b>1526</b>	<b>1539</b>	<b>1553</b>	<b>1567</b>	<b>1581</b>	<b>1595</b>	<b>1609</b>
Mt. Zion Elementary	103%	850	735	757	780	803	827	852	878
Mt. Zion Middle	103%	475	352	363	373	385	396	408	420
Mt. Zion High	103%	425	389	401	413	425	438	451	464
<b>TOTAL</b>		<b>1750</b>	<b>1476</b>	<b>1520</b>	<b>1566</b>	<b>1613</b>	<b>1661</b>	<b>1711</b>	<b>1762</b>
Central Elementary	101%	950	960	970	979	989	999	1009	1019
Roopville Elementary	101%	575	362	366	369	373	377	380	384
Whitesburg Elementary	101%	525	406	410	414	418	422	427	431
Central Middle	101%	800	932	941	951	960	970	980	989
Central High	101%	1050	1067	1078	1088	1099	1110	1121	1133
<b>TOTAL</b>		<b>3900</b>	<b>3727</b>	<b>3764</b>	<b>3802</b>	<b>3840</b>	<b>3878</b>	<b>3917</b>	<b>3956</b>
Sharp Creek Elementary	106%	825	706	748	793	841	891	945	1001
Temple Elementary	108%	725	810	875	945	1020	1102	1190	1285
Temple Middle	108%	500	545	589	636	687	741	801	865
Temple High School	108%	700	571	617	666	719	777	839	906
<b>TOTAL</b>		<b>2750</b>	<b>2632</b>	<b>2828</b>	<b>3040</b>	<b>3267</b>	<b>3512</b>	<b>3775</b>	<b>4058</b>
Ithica Elementary	106%	600	415	440	466	494	524	555	589
Sand Hill Elementary	105%	625	749	786	826	867	910	956	1004
Glanton-Hindsman Elem.	107%	650	582	623	666	713	763	816	873
Villa Rica Elementary	107%	550	566	606	648	693	742	794	849
Bay Springs Middle	105%	775	660	693	728	764	802	842	884
Villa Rica Middle	107%	625	483	517	553	592	633	677	725
Villa Rica High	107%	975	1241	1328	1421	1520	1627	1741	1862
<b>TOTAL</b>		<b>4800</b>	<b>4696</b>	<b>4992</b>	<b>5308</b>	<b>5644</b>	<b>6001</b>	<b>6382</b>	<b>6787</b>
Crossroads Academy	100%	270	132	132	132	132	132	132	132
Open Campus High	100%		52	52	52	52	52	52	52
<b>TOTAL</b>		<b>270</b>	<b>184</b>	<b>184</b>	<b>184</b>	<b>184</b>	<b>184</b>	<b>184</b>	<b>184</b>
<b>SYSTEM TOTAL</b>	<b>104%</b>	<b>15270</b>	<b>14241</b>	<b>14829</b>	<b>15452</b>	<b>16114</b>	<b>16817</b>	<b>17563</b>	<b>18356</b>

Source: Carroll County Schools. -



There are two post-secondary institutions within the community. The University of West Georgia (UWG) offers 58 undergraduate majors, nine Masters Degree Programs and one Doctorate of Education program. **Exhibit 107** depicts the student enrollment trend at the University of West Georgia. After more than a decade of enrollment growth, the total enrollment in the fall of 2002 was 9,675, and has currently surpassed 10,000. Graduate level students comprised 20.6% of enrollment. Minority enrollment percentage exceeds the percent of minorities in the Carroll County population. There are over 300 full time faculty positions. The Ingram Library has over 330,000 volumes housed in an 85,000 sq. ft. facility.

**Exhibit 107: 1991 – 2000 University of West Georgia Fall Enrollment**



Source: Department of Institutional Research and Planning, University of West Georgia

The West Central Georgia Technical College (WCGT) opened in 1968 as the Carroll County Area Vocational Technical School. Initially WCGT was managed by the Carroll County Board of Education. In 1987, the school became part of the statewide technical school network under the Georgia Department of Technical and Adult Education. WGTC maintains four campuses, including one in Carrollton. In fiscal year 2003, 38% of the college’s students were from Carroll County. The fall 2000 enrollment was 2,032 with 33.4% male and 66.6% female. Programs at West Georgia Technical College include technical associates degrees, diplomas and certificate programs, adult literacy, continuing education, and corporate training. WGTC uses an institutional effectiveness model to assess its personnel, finance, facilities, and learning resources.

**H. HOSPITALS AND PUBLIC HEALTH**

There are three hospitals in Carroll County with a total of 318 beds. The Tanner Health System operates a 202-bed hospital in Carrollton, a 52-bed facility in Villa Rica and the 57-bed Higgins General Hospital in Bremen. All facilities provide a wide range of inpatient and outpatient services to a regional area on a 24-hour basis. Recently an additional 40-bed facility was constructed at the Villa Rica facility. The Higgins General Hospital has recently undergone significant renovations.



Overall there are approximately 3.2 physicians per 1,000 Carroll County residents. However, there is a lack of dentists in the community with only 0.03 dentists per 1,000 people.

### ***I. LIBRARIES***

Public libraries within Carroll County are part of the West Georgia Regional Library System, which serves Carroll, Douglas, Haralson, Heard and Paulding Counties. There are five (5) branch libraries in the County and one deposit collection. Neva Lomason Memorial Library serves as the Headquarters library for the five-county West Georgia Regional Library System, and it houses 180,000 volumes in a 27,866 square foot building. Neva Lomason Memorial Library houses two meeting rooms, a Cultural Arts Exhibit Hall, and a Special Collections Room which includes genealogical and local history materials. This building houses the administrative staff of the West Georgia Regional Library System, including nine (9) State-paid professional librarians whose duties are to serve the needs of all libraries within the system. West Georgia Regional Library operates a bookmobile and a courier service from this location which serves all branches in the system as well as school media centers throughout the area.

Warren P. Sewell Memorial Library of Bowdon is a 6,500 square foot facility which houses 27,933 books and library items. The library features a community meeting room, a children's story time area, and a Special Collections Room which emphasizes materials about the decorative arts.

The Villa Rica Public Library consists of a 5,000 square foot building which houses 25,688 books and other items. The building includes a meeting room for use by the public.

The City of Mt. Zion Public Library opened on October 1, 2007 and is located in the Mt. Zion Community Center, a 8,280 square foot building. This library houses 4,000 books.

The library system estimates that the County will need at least 75,000 square feet of public library space by 2020 in order to meet minimum state library standards. The new Whitesburg Public Library opened March 31, 2008. Growth along the I-20 corridor indicate the need for an additional library facility in the Temple area (7,134 sf), and proposed development in the eastern part of the county certainly will require an additional library facility (15,000 sf) beyond the 2500 sf library just opened by the City of Whitesburg. Additionally, growth in the Mt Zion area will require a 5,000 sf facility by 2020.

Ingram Library on the campus of the University of West Georgia in Carrollton serves as a governmental document depository.

### ***J. RECREATIONAL FACILITIES***

The Carroll County Recreation Department operates the McIntosh Reserve Park, a sports complex in Carrollton and 150 acres of green-space adjacent to the sports complex at Oak Mountain. In total the County maintains 753 acres, 523 of which is at the McIntosh Reserve. The Recreation Department provides sports league services to over 150 youth and adult teams by offering a wide range of sporting opportunities. The McIntosh Reserve Park, which serves a regional population, has camping, hiking, horseback riding, pavilions and water park facilities. Additional rural recreational facilities include the John Tanner State Park, which offers boating,



camping and fishing opportunities. Each City within the County is responsible to provide recreation and park facilities to their citizens. Through the development of this Plan, the County established an open space preservation goal of 20% of the land. A portion of this land will be intended for passive recreational uses appropriate for the protection of natural resources.

Recent acquisitions include a 262 +/- acre greenspace property on Highway 113 and a 304 +/- acre property at Blackjack Mountain. A Master Passive Recreation Plan was just completed to include McIntosh Reserve and its 3-greenspace acquisitions. Funded as part of the Special Purpose Local Option Sales Tax (SPLOST), the recreation department recently built an approximately 32,000 square feet gymnasium on site of the County recreation park. This addition enabled the recreation department to meet its needs into the near future. Long-term plans are to construct a similar recreation complex with gymnasium in the northern portion of Carroll County to accommodate future recreation needs.

### ***K. UTILITIES***

The cities and unincorporated areas of Carroll County are served by the Carroll Electric Membership Corporation (Carroll EMC), Georgia Power or Greystone Power. Electric power is provided by an integrated transmission system. In Carroll County, this system consists of transmission voltages of 12 KV, 25KV, 46 KV, 115 KV, 500 KV and 230 KV. Businesses with a connected load greater than 900 KW have the option to choose between Carroll EMC, Georgia Power, or Greystone Power for service. Natural gas is supplied locally by the Atlanta Gas Light Company for residential and industrial customers.

The number and location of new electric utility connections can provide valuable information regarding the pace and density of new development and economic activity. **Exhibit 108** shows map grid data for new Carroll EMC connections. New electricity connections to the Carroll EMC system were concentrated between Carrollton, in the center of the County, and Villa Rica in the northeast part of the County. The most significant connection growth occurred in and near Villa Rica. Other significant growth areas were in the northwest and east portions of Carrollton. Few new connections were made in the rural south and west of the County. Overall there were 1,703 new connections in the grid system covering Carroll County.



Exhibit 108: New Electric Service Connections in 2003

Legend	Grid #		511-4		511-1		611-4		611-1				
		New Connection		0	3	35	28	0.0%	0.2%	2.6%	2.1%		
Dark Blue<0.5% Light Blue<1.0% Green<2.0% Yellow<3.0% Pink<5.0% Red>5.0%	Percent of New Connections		17	47	52	64	1.3%	3.6%	3.9%	4.8%			
			511-3	511-2	611-3	611-2	711-3						
			0	38	41	1	0.0%	2.9%	3.1%	0.1%			
			410-3	410-2	510-3	510-2	610-3	610-2					
			0	1	2	8	16	119					
			0.0%	0.1%	0.2%	0.6%	1.2%	9.0%					
		209-1	309-4	309-1	409-4	409-1	509-4	509-1	609-4	609-1			
		0	1	3	3	9	11	31	8	4			
		0.0%	0.1%	0.2%	0.2%	0.7%	0.8%	2.3%	0.6%	0.3%			
		209-3	209-2	309-3	309-2	409-3	409-2	509-3	509-2	609-3	609-2		
		4	8	4	1	20	15	11	16	39	48		
		0.3%	0.6%	0.3%	0.1%	1.5%	1.1%	0.8%	1.2%	2.9%	3.6%		
		208-4	208-1	308-4	308-1	408-4	408-1	508-4	508-1	608-4	608-1		
		1	4	1	3	18	24	9	36	12	1		
		0.1%	0.3%	0.1%	0.2%	1.4%	1.8%	0.7%	2.7%	0.9%	0.1%		
		208-3	208-2	308-3	308-2	408-3	408-2	508-3	508-2	608-3	608-2		
		0	2	7	4	2	6	14	120	17	2		
		0.0%	0.1%	0.5%	0.3%	0.2%	0.4%	1.1%	9.1%	1.3%	0.2%		
		207-4	207-1	307-4	307-1	407-4	407-1	507-4	507-1	607-4	607-1	707-4	707-1
		0	1	4	8	23	76	42	11	15	5	0	0
		0.0%	0.1%	0.3%	0.6%	1.7%	5.7%	3.2%	0.8%	1.1%	0.4%	0.0%	0.0%
		207-3	207-2	307-3	307-2	407-3	407-2	507-3	507-2	607-3	607-2	707-3	707-2
		1	2	7	2	7	8	4	7	16	11	1	1
		0.1%	0.2%	0.5%	0.2%	0.5%	0.6%	0.3%	0.5%	1.2%	0.8%	0.1%	0.1%
		206-4	206-1	306-4	306-1	406-4	406-1	506-4	506-1	606-4	606-1	706-4	706-1
		1	4	6	8	6	3	1	5	2	0	1	0
		0.1%	0.3%	0.4%	0.6%	0.4%	0.2%	0.1%	0.4%	0.2%	0.0%	0.1%	0.0%
		206-3	206-2	306-3	306-2	406-3	406-2	506-3	506-2	606-3	606-2	706-3	706-2
		0	1	2	5	8	4	7	4	2	0	0	0
		0.0%	0.1%	0.2%	0.4%	0.6%	0.3%	0.5%	0.3%	0.2%	0.0%	0.0%	0.0%
		205-4	205-1	305-4	305-1	405-4	405-1	505-4	505-1				
		0	0	1	1	1	2	0	0				
		0.0%	0.0%	0.1%	0.1%	0.1%	0.2%	0.0%	0.0%				

Source: Carroll Electric Membership Corporation



***L. SOLID WASTE MANAGEMENT***

Carroll County and the municipalities of Bowdon, Carrollton, Mount Zion, Temple, Roopville, Villa Rica, and Whitesburg jointly manage their solid waste needs. The Carroll Multi-Jurisdictional Solid Waste Management Plan explains their goals and objectives regarding solid waste management.