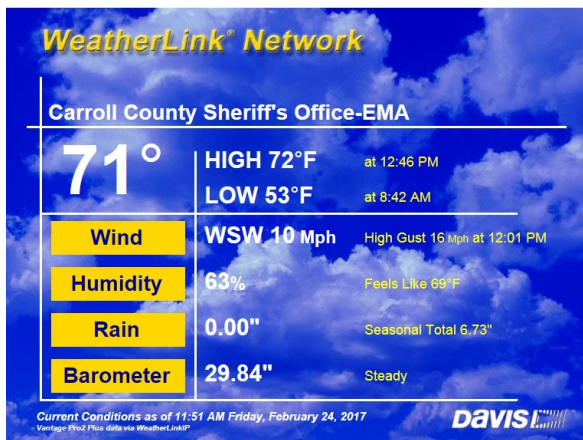


## Weather Station

To access the weather data, you can view it online at: [www.weatherlink.com/user/carrollsheriff](http://www.weatherlink.com/user/carrollsheriff) or you can download an app for your smart phone!

### For Mobile Users:

Go to the AppStore/Play Store and search for “weatherlink,” and Weather-Link (Davis Instruments Corp.) will appear as a selection. Download and install. After the app has finished installing, open it and click the + sign to add a new station. Search for Carrollton, GA, select Carroll County Sheriff's Office-EMA, then click Done. You will now see the current local data, as it is being collected.



## Are You Ready?

Emergencies can happen anytime, anywhere. CCSO-EM encourages people to take three key steps to be better prepared.

1. Create a disaster supplies kit
2. Make and practice a disaster plan
3. Be informed

Don't forget to take into consideration family with special needs, such as the elderly, and pets and livestock.

For more information, including plan templates and mobile apps visit

[www.ready.ga.gov](http://www.ready.ga.gov)

# Carroll County Severe Weather Warning Sirens



**CARROLL COUNTY SHERIFF'S OFFICE  
EMERGENCY MANAGEMENT**

896 Newnan Road

Phone: 770-830-5882

Email: [tpadgett@carrollsheriff.com](mailto:tpadgett@carrollsheriff.com)

Carroll County Sheriff's Office  
Emergency Management  
**Sheriff Terry E. Langley**

## Severe Weather

Storms can quickly intensify with potentially lethal consequences. While monitoring the news media and a NOAA severe weather radio are your first line of defense, Carroll County Sheriff's Office Emergency Management (CCSO-EM) helps to alert residents of approaching severe weather by activating outdoor warning sirens.

## NWS Polygon Warnings

The National Weather Service (NWS) can issue single or multiple severe thunderstorm, flash flood and/or tornado warnings. NWS has the ability to outline very specific geographic areas on its storm-tracking radar with polygons (a closed two-dimensional shape) to mark the locations most likely to be affected.

## CCEMA Siren Activation

In the past, when NWS issued a warning, CCSO-EM activated all the sirens in the County. But with advances in NWS technology and the use of the County's WeatherWarn software, CCSO-EM will be able to activate just the sirens in the storm affected areas of the county. These sirens will sound for approximately a 1-square mile radius and do not provide county-wide coverage.

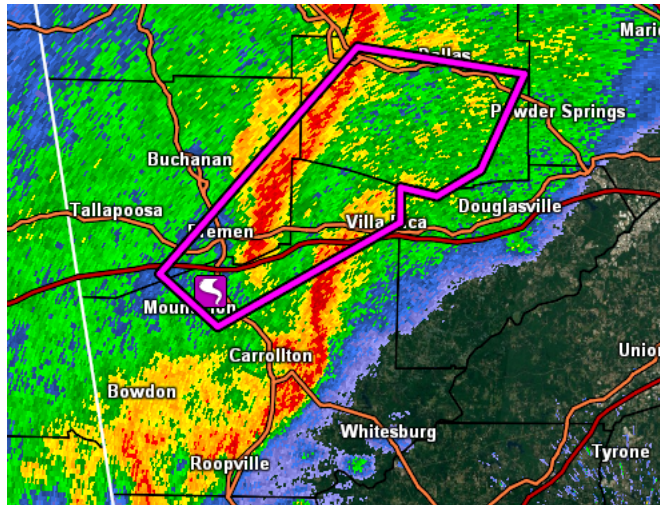
## Hear Sirens? Take Cover!

When NWS issues a severe weather warning, CCSO-EM can activate its severe weather warning sirens within the polygon area(s) to alert the locations and people targeted in the path of the storm and not the entire County. *So when you hear sirens, you know you must take immediate action to stay safe.*

## Seeking Shelter

Following the tips below can help you and your pets stay safe.

- Take shelter in the lowest part of a sturdy building.
- Put as many interior walls between you and the outside as you can.
- Stay away from windows and doors.
- Listen to a battery-operated NOAA Weather Radio for official updates.



An EFO tornado spotted on Radar November 30, 2016.